



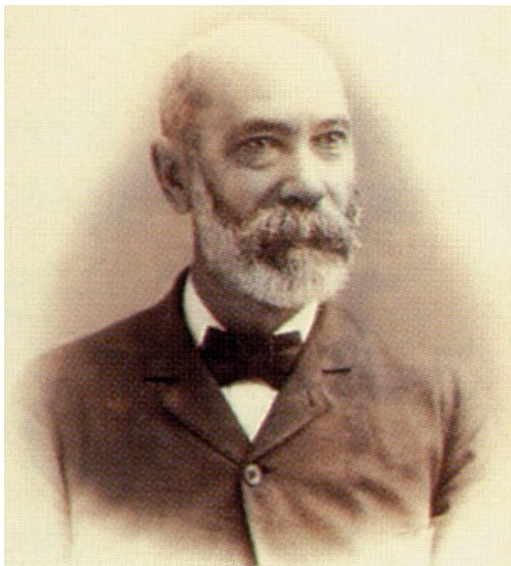
## NEWS FROM THE CUTTING EDGE

*Helpful Tips From The Professionals At Hyde IBS*

# HYDE<sup>TM</sup> 140

Industrial Blade Solutions Years

As Hyde celebrates another milestone anniversary, we would like to take a moment to thank our customers, distributors, suppliers and employees. We are very fortunate to have fostered such long-standing relationships over the years—they are the foundation on which we built our first 140 years. In a recent newsletter, we noted that Hyde has 6 employees with more than 40 years of experience, 18 employees with 30 to 40 years of experience and 36 employees with 20 to 30 years of experience. We also have several multi-generational parent and son or daughter teams working throughout the operation. Founder Isaac Hyde would be proud that we've carried on his legacy and craftsmanship to this very day. Here's to the next 140!



We'd like your feedback on what you would find helpful in upcoming issues of The Cutting Edge. E-mail us at [info@hydeblades.com](mailto:info@hydeblades.com)

### CUSTOMER SPOTLIGHT:

CONVEYING COMPANY KEEPS MOVING IT FORWARD FOR CUSTOMERS

## ADVANTAGE CONVEYOR

Advantage Conveyor, located in Raleigh, NC, is a manufacturer of custom and modular conveying equipment for the packaging, food processing, pharmaceutical and cosmetics industries. Founded in 1991, the company has quickly become a leader in the design, fabrication and installation of conveyors and related equipment across the U.S.

### TRADE SHOW SCHEDULE

Visit us at these upcoming trade shows or conventions:

**March 15–17, 2015**

Seafood Expo North America  
(Food Processing)  
Boston, MA

**March 25–28, 2015**

Coated Abrasives Fabricators  
Association (CAFA) Convention  
(Abrasives)  
Las Vegas, NV

**April 12–15, 2015**

NetPlus Alliance National  
Meeting  
(General Industrial)  
Las Vegas, NV

**April 23–27, 2015**

NAHAD Convention  
(Hydraulic Hose)  
Miami, FL

**April 25–27, 2015**

ISA Convention/Show  
(General Industrial)  
Cleveland, OH



With projects ranging in size from stand-alone conveyors to fully integrated conveyor systems, Advantage Conveyor has established and maintained a strong commitment to serving customers' needs and ensuring successful completion of projects—high quality, cost-effective solutions with minimal lead times and maximum return on investment.

As a part of its solutions focus, the manufacturer depends on Hyde IBS not only for the machine knives it uses in the fabrication of a wide variety of rubber and plastic belts, but also in some of the conveyor systems it designs and builds. Hyde knives deliver the clean and consistent cuts and solid blade life Advantage requires when fabricating belts for its custom-built conveyor units. You can trust both Hyde and Advantage Conveyor to offer solutions to your most complex problems!



Visit Advantage Conveyor's website at [www.advantageconveyor.com](http://www.advantageconveyor.com).

For more information on belt fabrication blades, contact us at [info@hydeblades.com](mailto:info@hydeblades.com).



**Our Solid Steel Offer:**  
Receive a refund if  
you are not satisfied  
with our product in  
the first 60 days!

[Request Information](#)

## LEADING EDGE PRODUCT: NEW BROCHURE SPOTLIGHTS EXTENSIVE RANGE OF STANDARD AND CUSTOM BLADES FOR POULTRY PROCESSING

A full range of high-performance blades designed for almost any poultry processing operation is presented in a new four-color brochure now available. [Hyde IBS Poultry Processing Blades](#) are designed with high-grade stainless steel to outperform competitive blades by employing the highest manufacturing and quality control standards.

This six-page brochure describes the full product line of standard circular aftermarket replacement blades designed for the most popular poultry processing machines. Helpful charts assist users in identifying the proper blades with a wide range of diameters and bevels available with or without slots, notches or scallops.



## STRONG INDICATORS COMING OUT OF IPPE 2015 FOOD PROCESSING SHOW

Hyde recently exhibited at the IPPE 2015 show in Atlanta, GA, a major annual food processing show focusing on the poultry, meat and fish industries. The event is typically well attended with folks traveling to the show from across the United States as well as all corners of the world. If you remember back to late January 2014, you'll remember that the city was hit by a major ice storm—right on the first day of IPPE 2014. That storm crippled Atlanta for a few days, and attendance at the show, understandably, was very light. This



year's event was "back to normal," with solid attendance all three days, and great networking opportunities for all exhibitors. The mood out in the marketplace is positive and strong, and this bodes well for the industry in 2015. We look forward to following up with all the great connections and leads we got from IPPE.

For more information on this show and organization: [www.ippexpo.com](http://www.ippexpo.com).



---

## INDUSTRIAL KNIFE AND BLADE RESOURCE WEBSITE NOW MOBILE DEVICE FRIENDLY

As more smart phones, tablets, and other mobile devices make their way onto the manufacturing floor, so follows the need for helpful information to be accessible at one's fingertips. Building upon the resources found on our existing site, we've launched a version that is more user friendly for holders of mobile devices.

Built with navigation bars and dropdown menus better suited for smaller devices, the website provides details on our full line of industrial knives and blades for a wide variety of markets including **food processing; cloth and textile and leather; hose and tube; tire and rubber; package converting; paper and packaging; and abrasives** as well as for **general industrial applications**. Data on individual blade types and sizes can be found here online or as downloadable PDF files.

The site can be found at [www.hydeblades.com](http://www.hydeblades.com).



---

## HYDE IBS OFFERING EXCLUSIVE SPECIALS NOW ON LinkedIn!



Join us on LinkedIn and get the latest news and developments in the industrial blades industry, and share information with your colleagues in the food processing, cloth and textile and leather, hose and tube, tire and rubber, package converting, paper and packaging, abrasives and general industrial marketplaces. You'll also find specials on certain products found nowhere else!

Visit us at Hyde IBS's company page on LinkedIn at:

---

**Hyde Industrial Blade Solutions — Solutions You Can Count On!™**



Hyde Tools, Inc. • 54 Eastford, Rd., Southbridge, MA 01550 • [www.hydeblades.com](http://www.hydeblades.com)  
Ph: (800) 872-4933 or (508) 764-4344 x2205 • [info@hydeblades.com](mailto:info@hydeblades.com)